

MESSAGE FROM THE PRESIDENT AND CEO

Thank a lineworker this April

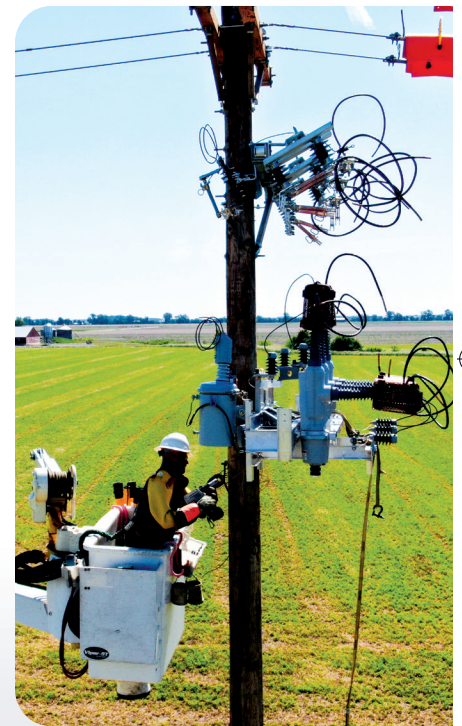
If you were asked to associate an image or a person with Hancock-Wood Electric, I bet you would picture a lineworker. Some of the most visible employees of the co-op, lineworkers work tirelessly to ensure our community receives uninterrupted power 24/7. "Lineworker" is listed as one of the most dangerous jobs in the U.S. This is understandable, as they perform detailed tasks near high-voltage power lines. Regardless of the time of day, having to brave stormy weather and other challenging conditions, lineworkers must climb 40 feet in the air, often carrying heavy equipment to get the job done.

Being a lineworker is not a glamorous or easy profession. It takes years of specialized training, ongoing education, dedication, and, equally important, a sense of service and commitment. How else can you explain the willingness to leave the comfort of their homes to tackle a challenging job in difficult conditions, when most are sheltering comfortably at home? This dedication and sense of service to the community truly sets them apart.

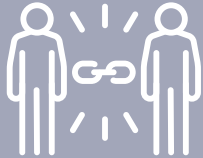
That's why we set aside the second Monday in April to celebrate and recognize the men and women who work around the clock to keep the lights on. Our dedicated and beloved lineworkers are proud to represent Hancock-Wood and they deserve all the appreciation and accolades that come their way on Lineworker Appreciation Day. Send your thanks to info@hwe.coop and we will share it with the crew!



Bill Barnhart
PRESIDENT & CEO



2023 Member Appreciation Day



June 6



Mark your calendar for our upcoming 2023 Member Appreciation Day on Tuesday, June 6! The event will be a drive-through from 4 p.m. - 6 p.m. at our office, located at 1399 Business Park Drive South, North Baltimore. All members who attend will receive a \$15 bill credit and a giveaway bag while supplies last. Members in attendance will also have a chance to win a \$100 bill credit; we will be drawing 10 members after the event. We hope to see you there!

We want to hear from you!

Your thoughts and opinions about
Hancock-Wood Electric Cooperative help us to serve you better.



In May Hancock-Wood Electric will be working with NRECA Market Research Services to complete member satisfaction surveys.

The surveys will be both by phone and email, but not everyone will be contacted. If you are contacted, we would greatly appreciate a few minutes of your time to share your opinions of the cooperative.

We strive to provide all members with safe, affordable, reliable, and clean electric service. By participating in the survey, you will help us make decisions that benefit you, your family, and your neighbors.

Thank you!

All information is confidential.

Operation Round Up awards more than \$41,000 in first quarter grants

The following organizations received funding at the February Community Trust Fund meeting:

Arlington Academic Alliance
Gliding Stars
Hancock County ESC
Kelleys Island Police Department
North Baltimore Public Library
North Baltimore Youth Travel League
Vanlue Fire Department
West Ohio Food Bank
Cooperative Family Fund

A six-member board, separate from the Hancock-Wood Electric Cooperative board, reviews all grant applications quarterly and approves applications for assistance — based on demonstrated need and funds available. Anyone is welcome to apply for a grant from the HWE Community Trust Fund, including individual members who find themselves in need of assistance. The next deadline to apply is April 17, 2023. Visit www.hwe.coop for more information.



Thank You



HANCOCK-WOOD ELECTRIC COOPERATIVE

Think Energy \$mart *with Bruce*

Since spring has finally arrived, I thought this would be a great time to remind everyone about the importance of inspecting sump pumps. If you have a sump pump in your basement or crawl space, now is good time to inspect the condition of the pump and the outlet plumbing, before the spring rains arrive.

A sump pump will typically last seven to 10 years. Unfortunately, a sump pump does not give you an indication when it is going to fail, like when a battery loses its charge. Today the pump works fine; tomorrow it may not. My suggestion is to replace your pump if it is at least seven years old, giving you less chance of a pump failure during a storm. Replacing your pump is a job that is not difficult for homeowners who are not afraid to get their hands a little wet and dirty. The cost to replace a standard 1/3 horsepower pump is typically about \$200 if you tackle the project yourself, or about \$400 if you call a professional.

I also recommend inspecting the grade of the dirt on the exterior of your home to ensure that surface water flows away from your home. Improper exterior grading will cause your pump to evacuate more water than necessary, increasing your energy costs and the amount of wear on your pump. If you have any pump or home energy questions, please contact me at 419-257-5025 or bruce@hwe.coop.

Bruce Warnecke is Hancock-Wood Electric Cooperative's energy advisor. He's been helping members learn how to save energy — and money — for more than eight years.



HANCOCK-WOOD ELECTRIC

CARS & COFFEE

Join us Saturday, May 20, 2023
8 a.m. - 10 a.m.

Hancock-Wood Electric
1399 Business Park Dr. South
North Baltimore, OH 45872

Want to learn more about
electric vehicles? Join us
for this informational
event by energy experts.

visit www.hwe.coop for more information

CONTACT

800-445-4840
FAX: 419-257-3024

WEBSITE

www.hwe.coop

OFFICE

1399 Business Park Drive South
P.O. Box 190
North Baltimore, Ohio 45872-0190

BOARD OF TRUSTEES

Gene Barker
Chairman

William Kale
Vice Chairman

Tom Kagy
Secretary/Treasurer

Lee Anne Dierksheide
Assistant Secretary

Tim Phillips

Ed Crawford

Duane Fry

Charles Beagle

Ron Riegler

Brian Terry

Bill Barnhart

President and CEO

PAYMENT OPTIONS

online, dropbox, office, by phone, or
automatic bill pay

HAVE A STORY SUGGESTION?

Email your ideas to:
leslie.guisinger@hwe.coop

Members First! 
HANCOCK-WOOD
ELECTRIC COOPERATIVE
A Touchstone Energy® Cooperative