

Welcome to Hancock-Wood Electric Cooperative's  
Diamond Jubilee Celebration -  
75 years of service excellence!

Let's explore HWEC history...



# Why were farmers left in the dark?



In the 1930s, there were 6.8 million farms across the U.S.; however, only 10% or fewer had electrical service.



For-profit utilities did not wish to serve rural areas because there was **little profit**.  
When they did, they charged high fees, often double that of urban residents.

For-profits reasoned:

“Farmers won’t use much electricity.”

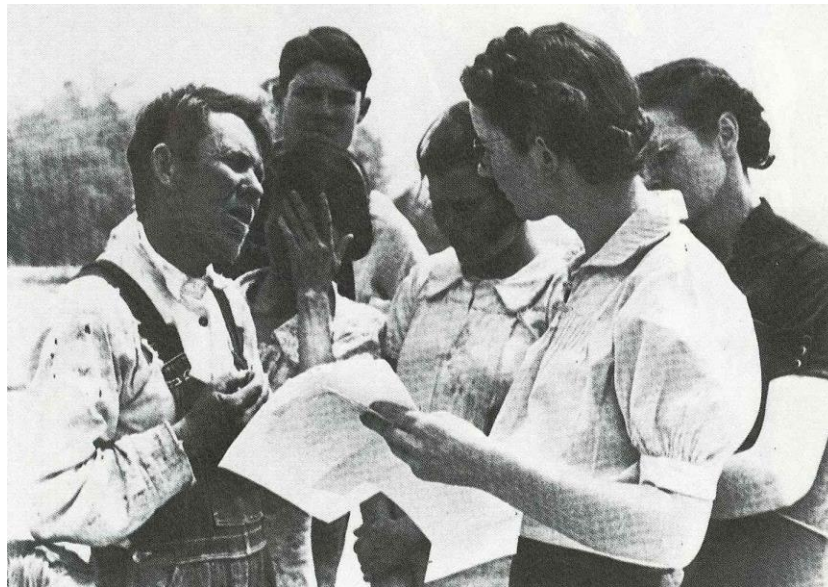
“The homes are too far apart.”

	Average number of customers per mile of line	Average annual revenue per mile of line
Cooperatives:	7	\$10,565
IOUs:	35	\$62,665
MUNIs:	46.6	\$86,302

1935: President Franklin Roosevelt felt strongly having electricity should not be limited to city dwellers, and created the [Rural Electrification Administration \(REA\)](#), which made funds available for rural electricity. REA later became the Rural Utilities Service and is part of the U.S. Department of Agriculture.



- Late 1930s: REA needed applicants, and farmers traveled in teams to spread the word to “Get Lights!”
- Believe it or not, there was some resistance:
  - Some worried about owing money to the government.
  - Some felt electricity wasn’t worth the \$5 sign-up fee.
- **Benefits** like electric washing machines won over members.





- Most Rural Electric Cooperatives (RECs) purchased power from Investor Owned Utilities (IOUs) but some banded together to form Generation and Transmission Cooperatives (G&Ts).
- RECs formed statewide associations.

1937: Organizers in Hancock and Wood counties began a campaign to **Get Lights!**





1938: Hancock-Wood Electric Cooperative **officially was formed**. Staking for original power lines began.



1939: Pert Hindall set the **first meter** at Ober Apples's residence in Henry Township, Wood County. An **"Energization" celebration** was held August 25, in North Baltimore with co-op organizer C.C. Doyle and Chief Supreme Court Justice Carl. V. Weygandt throwing the master switch.



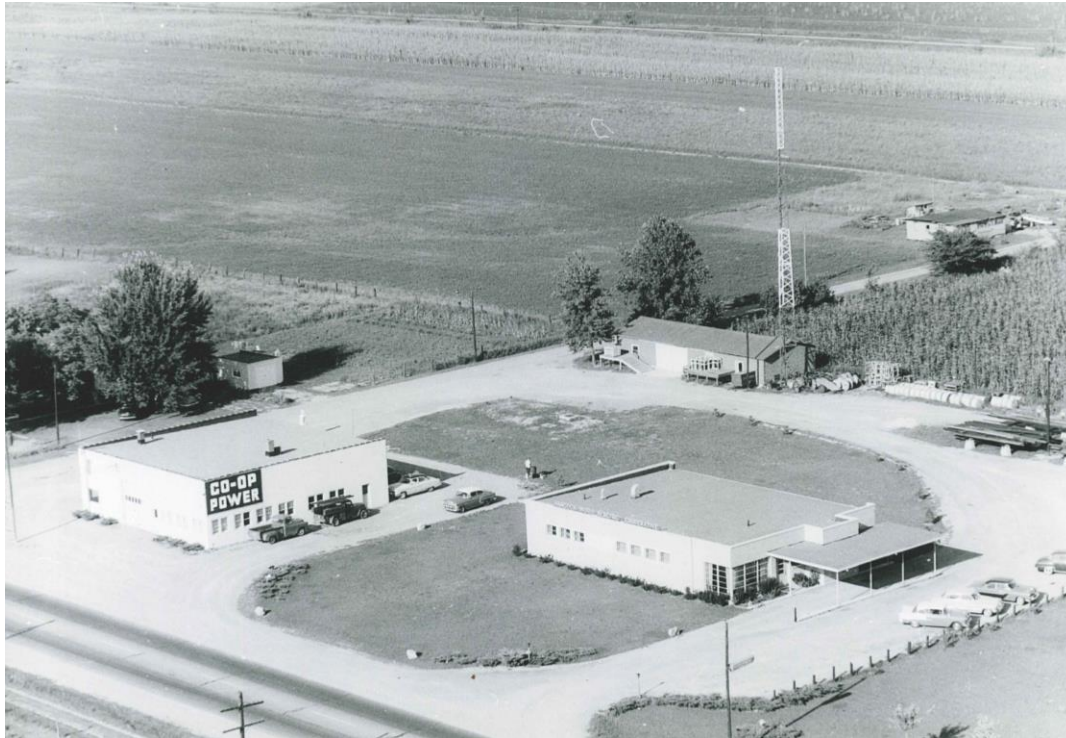
- 1941: 2,000<sup>th</sup> meter was set
- 1942: National organization NRECA was formed
- 1942: General Utilities electric system was purchased jointly by HWEC and other area utilities. HWEC instantly gained 330 miles of new line and **1,500 new members**
- 1943: HWEC instituted its first rate reduction



- Mid 1940s: Numbers of RECs doubled; HWEC member numbers tripled; miles of line quintupled.



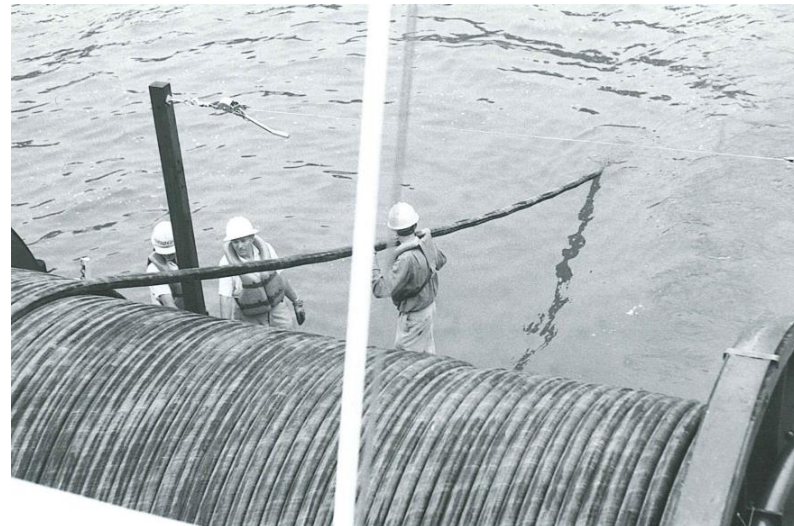
- 1952: HWEC moved to **new location astride I-75**
- 1953: More than 90% of farms were connected to electric power





- 1954: HWEC became the originator of, and first power supplier in the world to offer, individual security light service.

- 1965: A Palm Sunday **tornado** hit south and west Hancock County causing extensive devastation.
- 1967: Hancock-Wood and Lake Erie Electric Cooperative **merged**. Electric cable was laid for Kelley's Island.



- 1978: The **Blizzard of '78** begins January 25, causing severe line damage. At one point on January 27, every HWEC member had lost power. Line crew and volunteers worked day and night so that every last member's power was restored by January 30.





- 1981: Construction was completed on HWEC garage and warehouse



## *In Memoriam*

Over the years, Hancock-Wood sadly lost two employees from electric contact.

- 1953: Long-time lineman **Sylvester “Shorty” Herr** passed away from a line contact on July 5, in West Millgrove.
- 1984: **Robert Rose**, 49, died September 16 in a sub-station accident. Mr. Rose worked at HWEC for 23 years and was widely known and liked. He was survived by his wife and four children.

*We honor the memory of our dedicated linemen.*



Robert Rose



- 1990: Significant ice storm caused 4,000 outages in February
- 1998: Prism Propane was introduced
- 2000: George Walton was named President and CEO
- 2004: Automatic Meter Reading system was introduced
- 2005: Ice storm causes 4,000 outages in January, all restored
- 2005: Became first U.S. electric cooperative in history to broadcast its Annual Meeting via Internet
- 2008: New HWEC building opened
- 2008: Ice storm caused 3,000 outages in December, all restored



- In honor of Hancock-Wood Electric Cooperative's 75th Anniversary Diamond Jubilee

1938 - 2013

The Board of Trustees recognizes  
our Longest Serving Trustee  
Robert McClelland

for his dedicated years of service:

1954-1960

1984-1993

1996-2005



- In honor of Hancock-Wood Electric Cooperative's 75th Anniversary Diamond Jubilee  
1938 - 2013  
The Board of Trustees recognizes  
Gladys Baker Lee  
our Longest Served Member



102 years young  
and still living at  
the same originally  
powered location

- In honor of Hancock-Wood Electric Cooperative's 75th Anniversary Diamond Jubilee  
1938 - 2013  
The Board of Trustees recognizes  
John Cheney  
Past HWEC President  
for his dedicated years of service:  
1981-1995

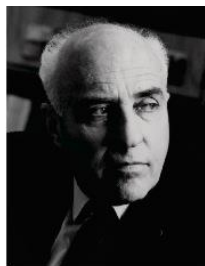


- In honor of Hancock-Wood Electric Cooperative's  
75th Anniversary  
Diamond Jubilee  
1938 - 2013

The Board of Trustees recognizes  
Eagle Township Hall as our  
Longest-served Commercial Membership



- Special thanks go to the dedicated efforts of all our  
Hancock-Wood Presidents  
Past and Present



R. Powers Luse  
1939 - 1966



Paul Hutchison  
1966 - 1980



Terrence O'Horo  
1980 - 1981



John Cheney  
1981 - 1995



William Cetti  
1995 - 1999



George Walton  
1999 - Present





## TODAY:

- Number of consumers: 12,974
- Miles of line: 1,827
- Miles of underground line: 178
- Padmount transformers: 1,357
- Overhead transformers: 7,380
- Poles: 34,727
- Number of substations: 21
- Counties served: Allen, Erie, Hancock, Hardin, Henry, Putnam, Sandusky, Seneca, Wood and Wyandot



- April 19, 2013

Thank you for joining us for our celebration today of 75 years of serving cooperative member-owners.

*The purpose of our electric cooperative is to power communities and empower members to improve the quality of their lives.*

