

MESSAGE FROM THE PRESIDENT AND CEO

Join us for the **2021 virtual annual meeting**

RSVP today for a chance to win \$500 off your energy bill!

Don't forget to join us on June 12, 2021, at 10 a.m. for our virtual annual meeting. Hear updates about your cooperative from our board of trustees and management and the results of our election in districts 1, 4, 5, and 10. RSVP by calling our office or emailing us at info@hwe.coop and ensure you are included in the bill credit drawings. We'll be drawing one \$500 bill credit and 15 \$100 bill credits. During the month

of June, we are also giving away a free travel first-aid kit to members while supplies last. Just stop by our office to pick yours up.

On June 12 at 10 a.m., members will be able to watch the pre-recorded video on our Facebook page (<https://www.facebook.com/hwe.coop>) or YouTube channel (<https://www.youtube.com/user/hancockwoodelectric/videos>).

Each member who RSVPed will also receive a phone call asking you to vote on two items: The first item is to accept the 2020 annual meeting minutes (these minutes are printed in the May magazine for your convenience and available online at www.hwe.coop), and the second item is to accept the election report. If you have any questions or comments following the meeting, our CEO and board chairman will be available immediately following the virtual event to take your phone calls.



George Walton
PRESIDENT & CEO



Two board members receive CCD in April



Lee Anne Dierksheide



Ron Riegle

Hancock-Wood Electric board members Lee Anne Dierksheide and Ron Riegle both received their Credentialed Cooperative Director (CCD) certification in April.

Certification and training is offered through the National Rural Electric Cooperative Association. HWE encourages all its trustees to earn these certifications because the coursework required dramatically broadens a trustee's knowledge of the electric cooperative industry, thereby enhancing his or her value to all HWE's member-consumers. All electric cooperatives in the U.S. utilize similar training.

The first required certificate is the CCD, which covers director duties, board operation, strategic planning, and more.

Think Energy Smart With Bruce



Today we have more options than ever to heat water for domestic use in our homes. A traditional hot water tank is the most popular existing system today. Those tanks last approximately 10 to 12 years. Members most often consider changing their water heating method when their existing system fails. The most popular option to replace a failed water heater is still a traditional tank water heater, but I am seeing a rise in other water heating technologies.

Over the next few months, I am going to explain a little about the most popular methods of heating water and provide some advantages and disadvantages for each technology. The

options that I will provide information about are:

- Tank electric heater
- Tank gas heater
- Tankless electric heater
- Tankless gas heater
- Heat pump electric heater

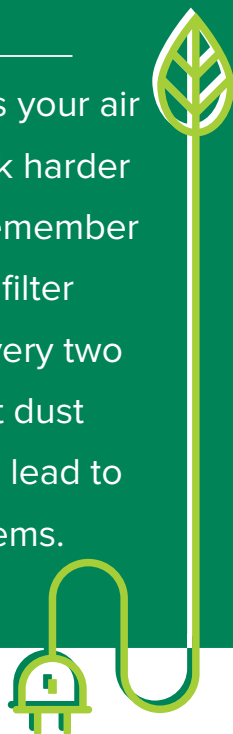
I have chosen the most popular technologies for our area. If you are interested in learning more about a technology not on this list, please contact me, and I will be happy to conduct some research and share that information with the membership. The best ways for you to reach me are bruce@hwe.coop or 419-257-5025.



Energy Efficiency Tip of the Month

A dirty filter causes your air conditioner to work harder than necessary. Remember to change your air filter every month (or every two months) to prevent dust buildup, which can lead to even bigger problems.

Source: www.energy.gov



*"A father
is someone
you look up
to no matter
how tall
you grow."*

HAPPY
Father's day

JUNE 20

Beat the peak!

Did you know that the cost of electricity goes up during periods of peak demand?



Normally, electricity costs only pennies per kilowatt-hour.



During peak load times, it can cost as high as a dollar per kilowatt-hour!



Electricity cost is highest when demand is greatest. The maximum, or “peak,” amount of electricity used determines your cooperative’s future cost of power. When the peak goes up, so does the cost for all members.

You can help by conserving energy during those peak use periods, often in late afternoon during the hottest days of summer.

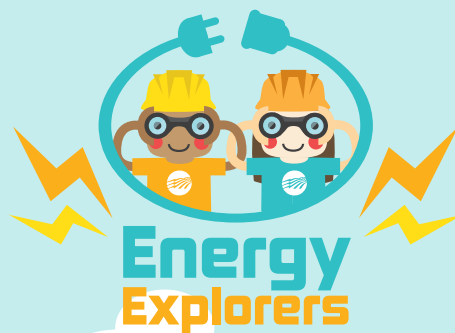
We offer incentives to members who participate in our load management program by having a radio-controlled switch installed on their electric water heater. When the switch is activated during a peak alert, the system will cycle on and off for brief periods of time to help us conserve energy.

Call our office for details on how you can have a radio-controlled switch installed and help us beat the peak!

SWIMMING POOL ELECTRICAL SAFETY CROSSWORD

Water and electricity never mix! When you're cooling off in the swimming pool, remember to practice electrical safety. Complete the pool safety crossword puzzle below.

Hint: Check your answers in the key below.



1 Down:

When possible, use _____ operated devices when outside near a swimming pool.

2 Across:

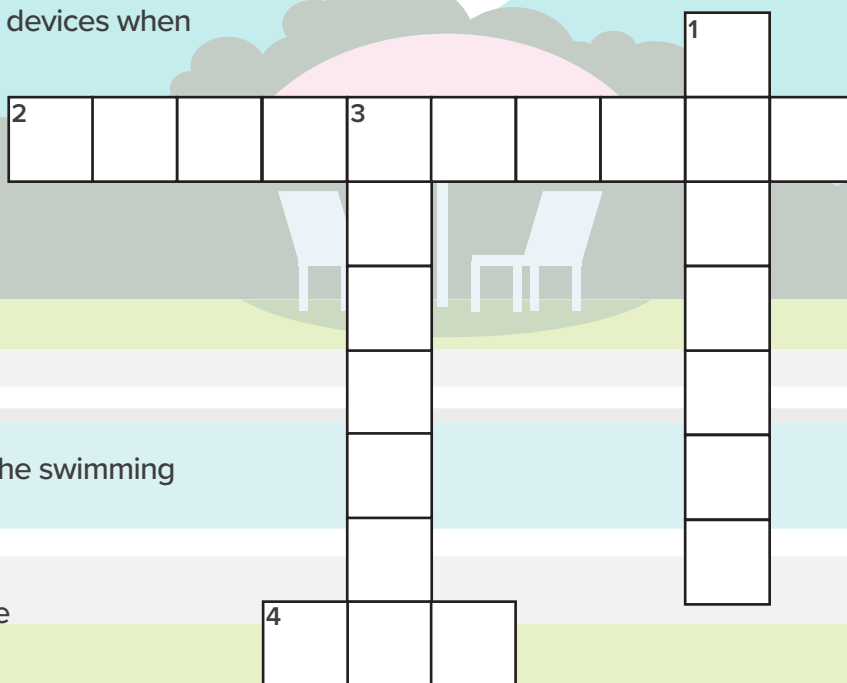
Never bring _____ devices near a swimming pool. If they come in contact with water, electric shock could occur. Devices should be kept at least 10 feet away from water sources.

3 Down:

If you hear _____, immediately exit the swimming pool. Storms may be near.

4 Across:

All outdoor electrical outlets should be covered to keep them _____.



Answer Key — 1 Down: battery 2 Across: electrical 3 Down: thunder 4 Across: Dry

CONTACT

800-445-4840
FAX: 419-257-3024

WEBSITE

www.hwe.coop

OFFICE

1399 Business Park Drive South
P.O. Box 190
North Baltimore, Ohio 45872-0190

BOARD OF TRUSTEES

Gene Barker
Chairman

William Kale
Vice Chairman

Ed Crawford
Secretary/Treasurer

Lee Anne Dierksheide
Assistant Secretary

Tim Phillips

Duane Fry

Charles Beagle

Tom Kagy

Ron Riegle

Brian Terry

George Walton

President and CEO

PAYMENT OPTIONS

online, dropbox, office, by phone, or
automatic bill pay

HAVE A STORY SUGGESTION?

Email your ideas to:
leslie.guisinger@hwe.coop

Members First!
**HANCOCK-WOOD
ELECTRIC COOPERATIVE**
A Touchstone Energy Cooperative